



MEET YOUR
Petcube
Fountain

1 PETCUBE FOUNTAIN SPECS

Dimensions (L x W x H):

255x121x140 mm / 10.04x4.76x5.51 inches

Weight:

- Stainless Steel Version: 800 grams / 1.76 lbs
- Ceramic Version: 990 grams / 2.18 lbs

Material:

- Water Basin: Stainless Steel 304 or Ceramic
- Water Basin frame: Food grade ABS
- Water Tank: Food grade PS
- Power Base: ABS"

Water Tank Capacity: 1.7 L / 57.5 oz

Number of Filters: 1

Type of filter:

The filter consists of 4 layers, from top to bottom:

- Meltblown Filter Media: Filter hair, sand and other bigger particles
- Activated Coal: Adsorption of organic pollutants, chlorine, and odors from water
- Ion Exchange Resin: Water Softening, Deionization
- Meltblown Filter Media: Filter hair, sand and other bigger particles

Filter Replacement Frequency: 1 month

Pump type: Magnetic Drive Pump; Easy to clean

Power Source: Battery powered + USB C cable (chew-proof)

Battery: Rechargeable Lithium-ion battery (YC 18650, 3.7V, 2600 mAh, 9.62Wh);
Up to 20 days of use on one charge

Noise Level: Below 30 dB

- The use of this device is not intended for people (including children) with limited physical, sensory or mental abilities or lack of experience and/or lack of knowledge, unless they are supervised by a person responsible for their safety or have been instructed on the use of the device.
- The use of this Water Fountain is intended for cats and small dogs
- Do NOT allow children to play around or with Water Fountain
- Do NOT use Water Fountain with pets that are not able to reach the tray
- Do NOT place any foreign objects inside the water tank
- Do NOT modify the Water Fountain
- Disconnect power supply for safety when the appliance is not in use
- Disconnect power supply when cleaning and doing maintenance
- Do NOT flood power adapter or power cord during cleaning
- This product is for INDOOR use only
- This product is not allowed to run without water
- Do NOT power ON/OFF if there is water on the contact points or plug
- Replace the filter once a month
- Clean the Water Fountain every 42 days

BATTERY OPERATION

This product contains a rechargeable Lithium-ion battery.

Battery Type: Lithium-ion (YC 18650)

Input: 100-240V AC

Output: 4.2V DC, 0.5-1A

Battery Capacity: 2600 mAh

Battery Voltage: 3.7V

Battery Energy: 9.62Wh

Below you will find some advice on the use of rechargeable batteries:

- The battery of the device cannot be replaced and must not be removed
- Batteries may not be disassembled, thrown into fire or short-circuited
- Never expose the device to excessive heat such as sunshine, fire or the like
- Only use the USB cable that came with your device

DISPOSAL

Batteries are hazardous waste. Do not dispose of it in regular household trash. Recycle it properly in accordance with state laws. Visit www.call2recycle.org or contact your local recycling center for battery recycling information. In compliance with California state law, rechargeable batteries must be recycled. Please do not dispose of this product in household waste.

FCC WARNING

Any changes or modifications not expressly approved by the party responsible for compliance could void the user's authority to operate the equipment. This device complies with part 15 of the FCC Rules. Operation is subject to the following two conditions: (1) This device may not cause harmful interference, and (2) this device must accept any interference received, including interference that may cause undesired operation.

FCC RADIATION EXPOSURE STATEMENT

This equipment complies with FCC radiation exposure limits set forth for an uncontrolled environment. This equipment should be installed and operated with a minimum distance of 20 cm between the radiator & your body. This device must not be co-located or operating in conjunction with any other antenna or transmitter.

ISED RSS WARNING. CANADIAN COMPLIANCE STATEMENT

This device complies with ISED license-exempt RSS standard(s). Operation is subject to the following two conditions: (1) this device may not cause interference, and (2) this device must accept any interference, including interference that may cause undesired operation of the device.

ISED RADIATION EXPOSURE STATEMENT

This equipment complies with ISED RF radiation exposure limits set forth for an uncontrolled environment. This device must not be co-located or operating in conjunction with any other antenna or transmitter. This equipment should be installed and operated with a minimum distance of 20 cm from your body.

Overview

- 1. Spout
- 2. Water Basin
- 3. Water Pipe
- 4. Propeller Lid
- 5. Water Propeller
- 6. Filter
- 7. Water Tank
- 8. Motion Sensor
- 9. Filter Compartment
- 10. USB Cable
- 11. Power Base
- 12. UV Light
- 13. Power Button
- 14. USB Port



Step 1. Charge your device.

We recommend to fully charge Petcube Fountain before its first use. Plug it in and let it fully charge. Green pulsing will indicate that device is charging. Green pulsing stops once device is 100% charged. (Fig. 4.1.1)

Step 2. Download Petcube application (Fig. 4.1.2) to your iOS or Android device.

The Petcube app requires iOS 14 or Android 7.1.2 or greater and can be downloaded at AppStore/Play market or at the link below:

<https://petcube.com/mobile-app/>

Step 3. Open the Petcube app on your iOS or Android device, and log in or sign up for a Petcube account (Fig. 4.1.3).

Step 4. Tap the plus icon in the right upper corner of the screen (picture) and pick Petcube Fountain from the list of options (Fig. 4.1.4).



Fig. 4.1.1

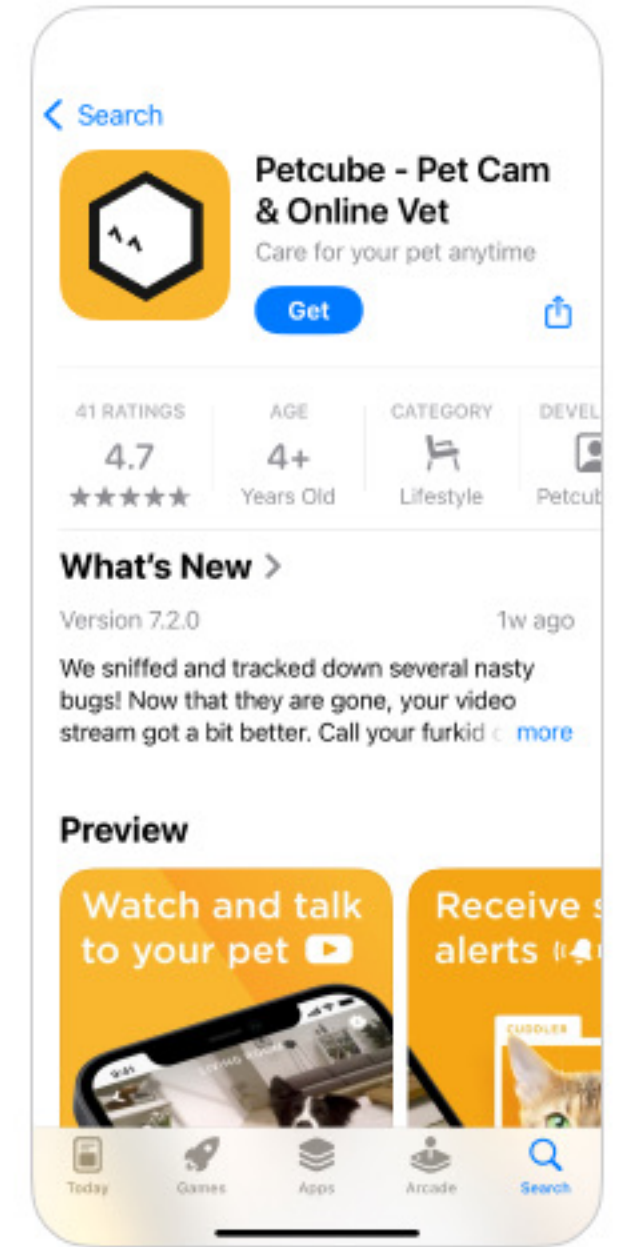


Fig. 4.1.2

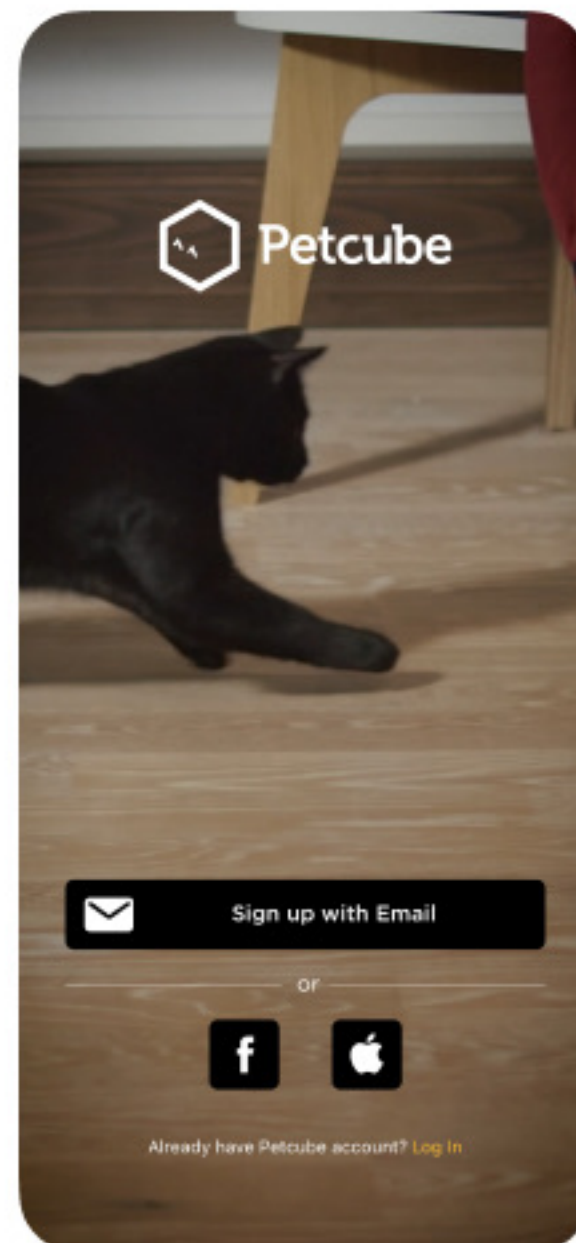


Fig. 4.1.3

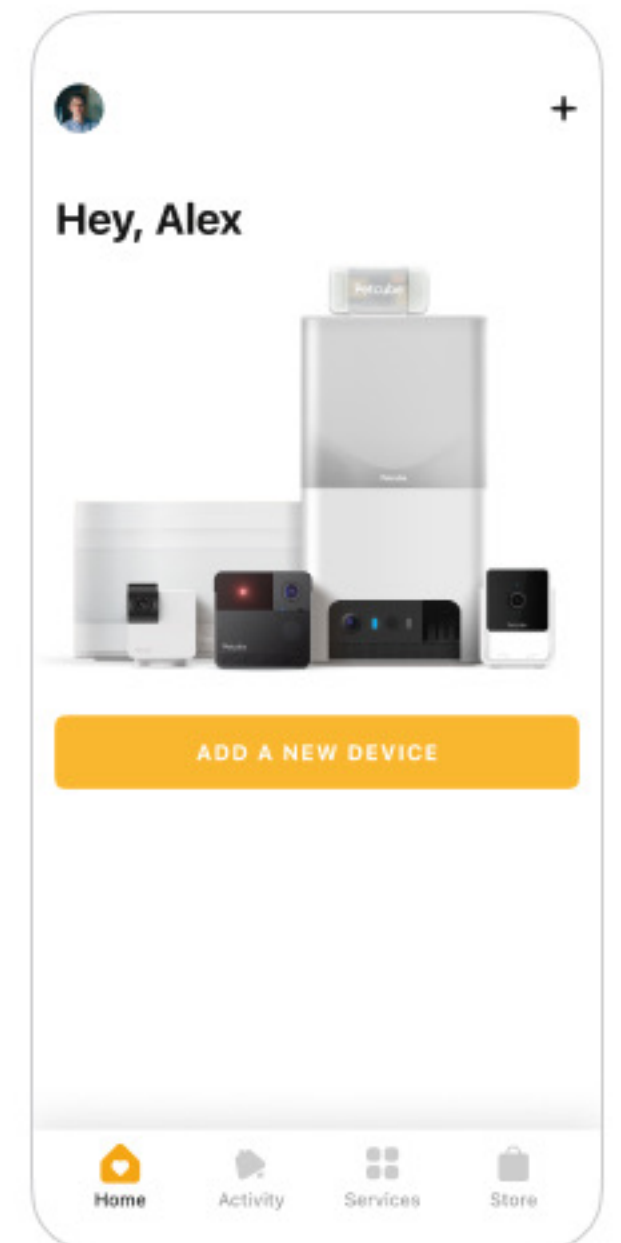


Fig. 4.1.4

Step 5. Follow the on-screen instructions to assemble your device. Lift the basin and install the water filter. (Fig. 4.1.5)

Step 6. Lift the tank, press and hold the start button. Hold until the green light flashes once. This is an indication that Water Fountain is On. (Fig. 4.1.6)

Step 7. Fill up the tank with 57 oz / 1.7L of water. Then place it back on top of the base. (Fig. 4.1.7)

Step 8. Place the fountain so that the Petcube logo faces your pet. The motion sensor underneath the logo detects your pet and starts the water flow. (Fig. 4.1.8)

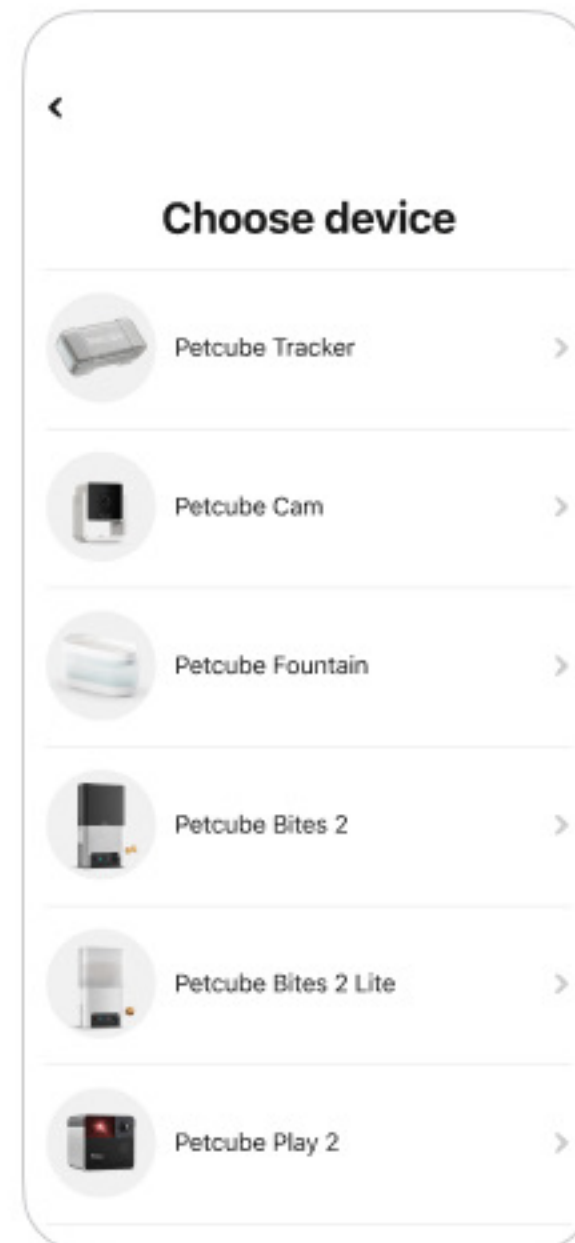


Fig. 4.1.5

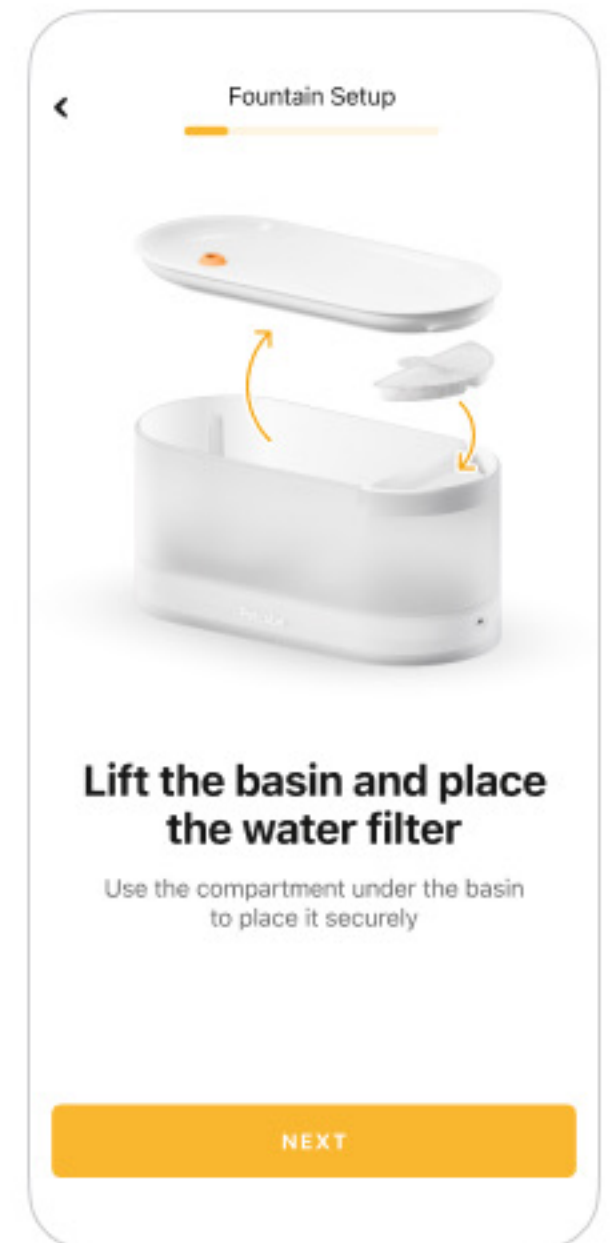


Fig. 4.1.6



Fig. 4.1.7

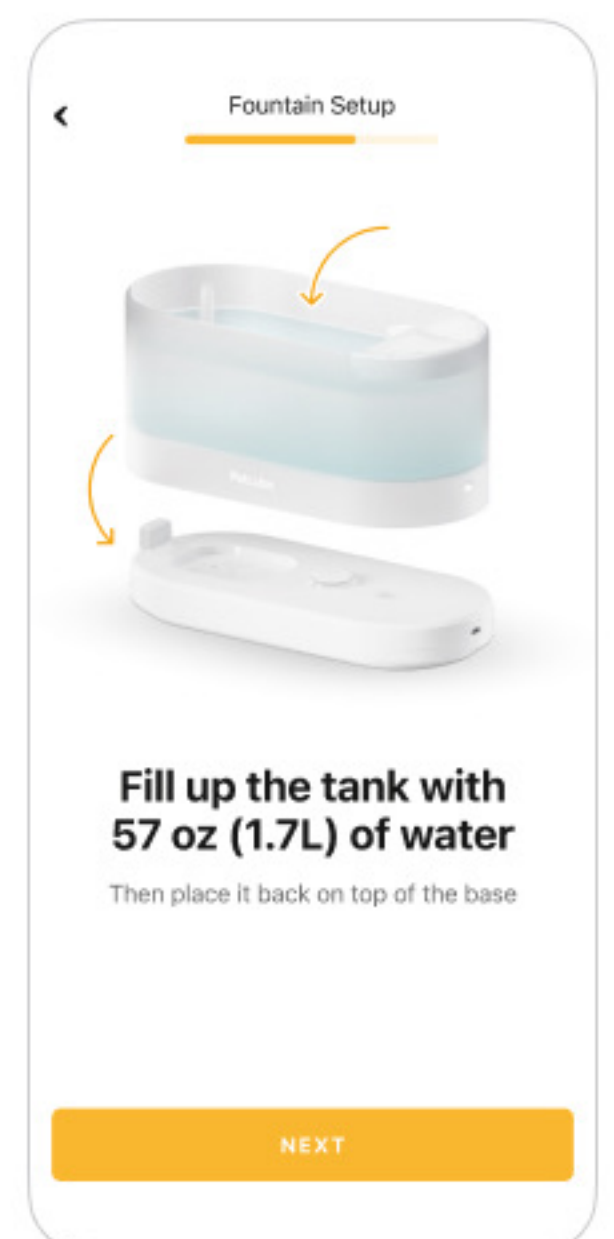


Fig. 4.1.8

Step 9. All set now.

The app handles the rest, tracking maintenance and filter life.

(Fig. 4.1.9)

(Fig. 4.1.10)

(Fig. 4.1.11)

(Fig. 4.1.12)

(Fig. 4.1.13)

(Fig. 4.1.14)

(Fig. 4.1.15)

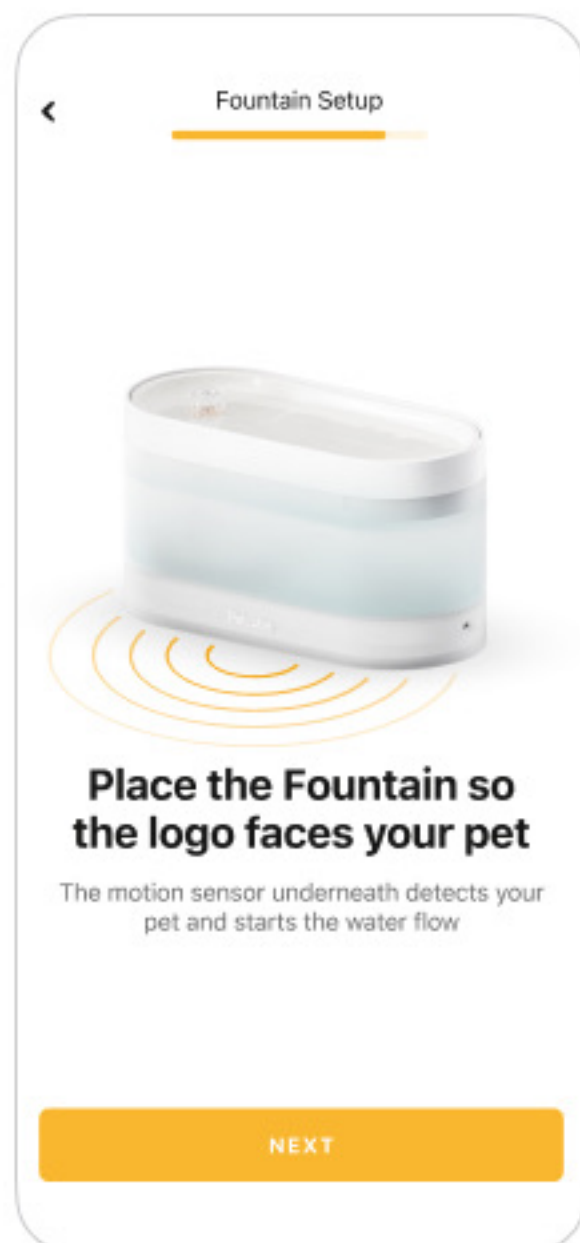


Fig. 4.1.9

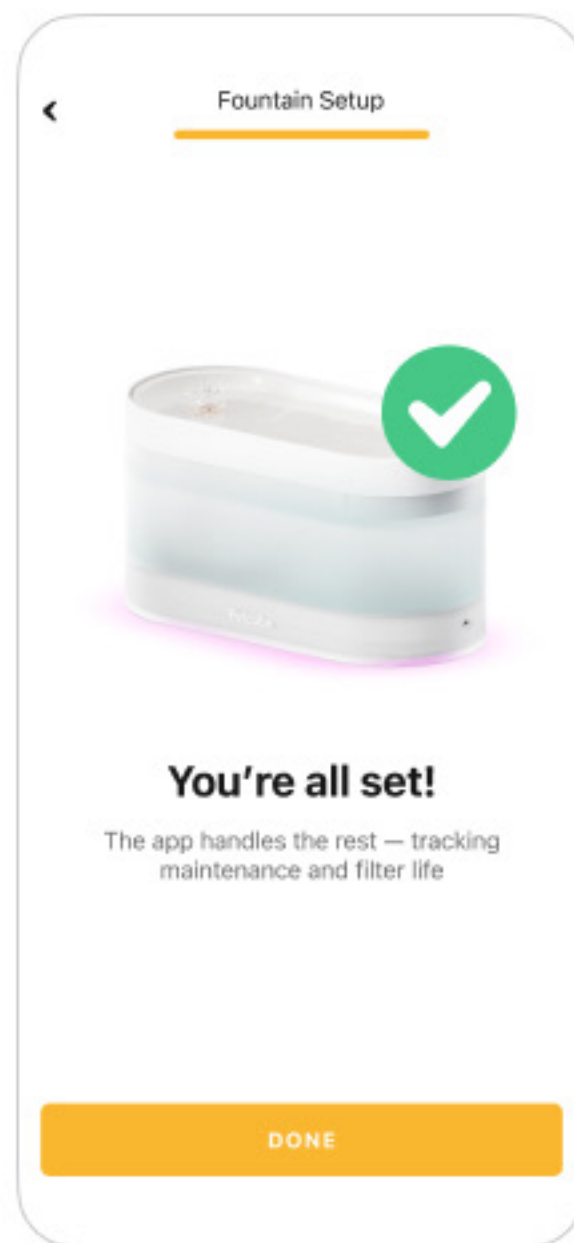


Fig. 4.1.10

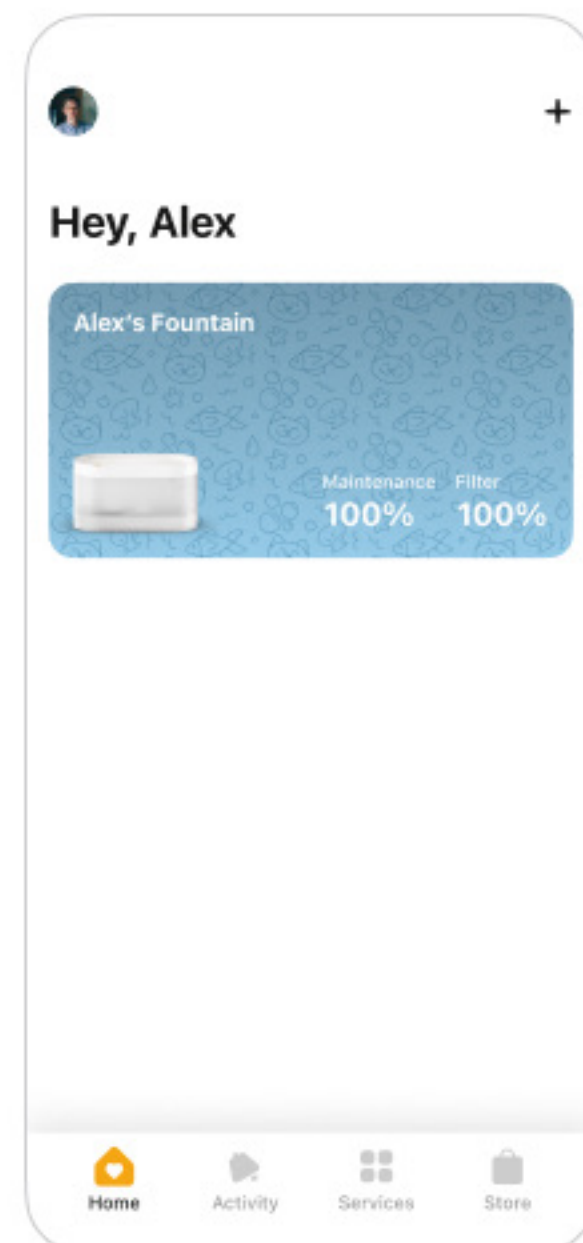


Fig. 4.1.11

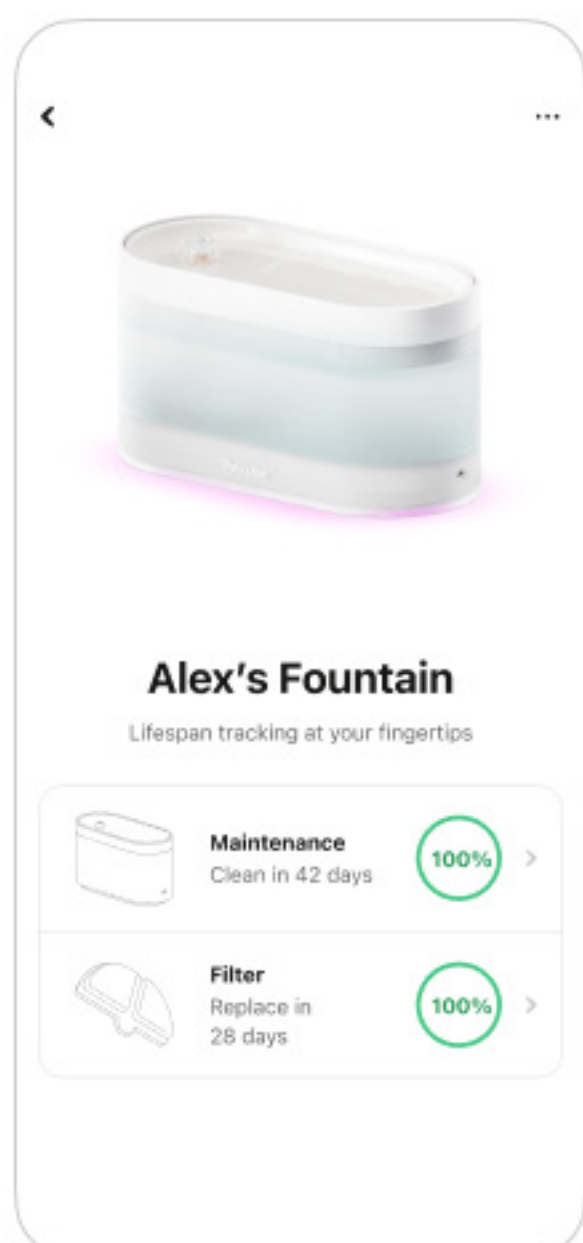


Fig. 4.1.12

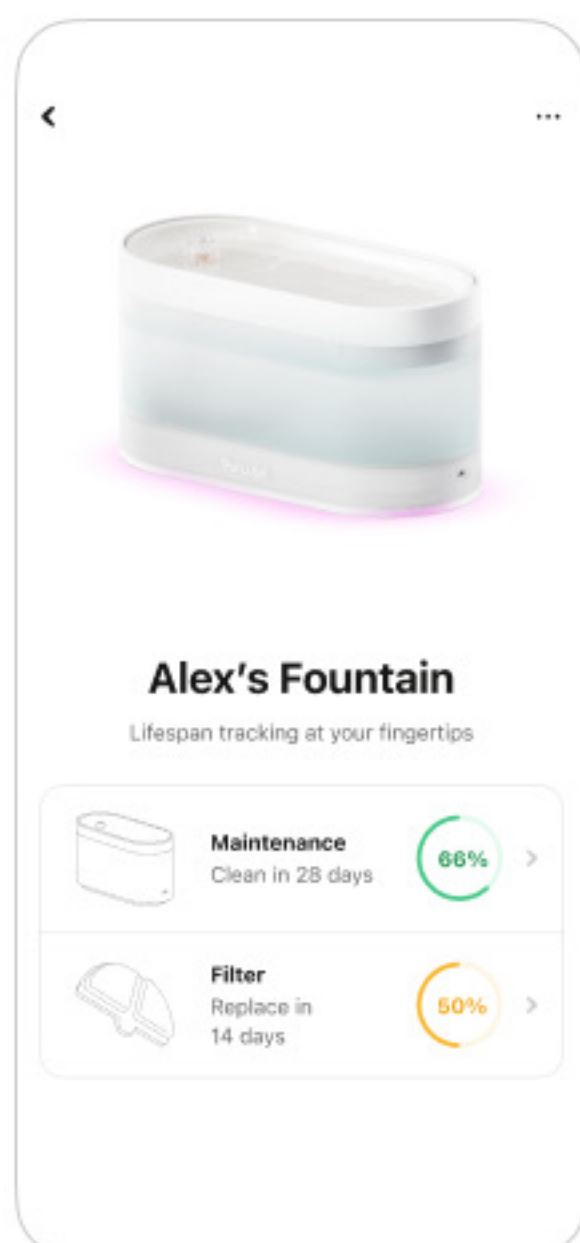


Fig. 4.1.13

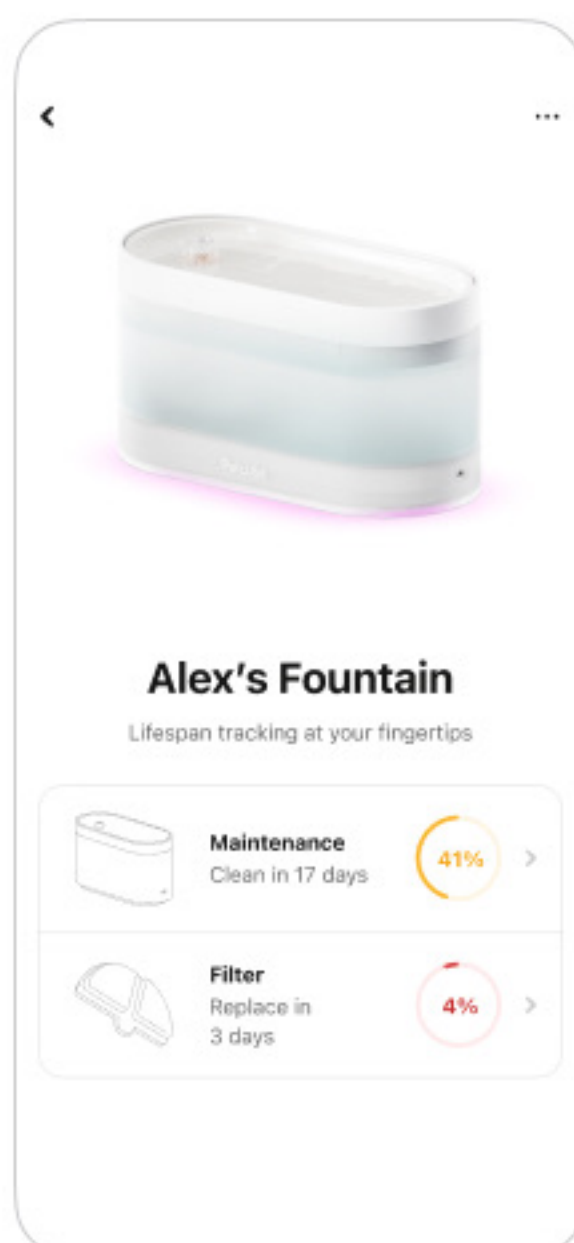


Fig. 4.1.14

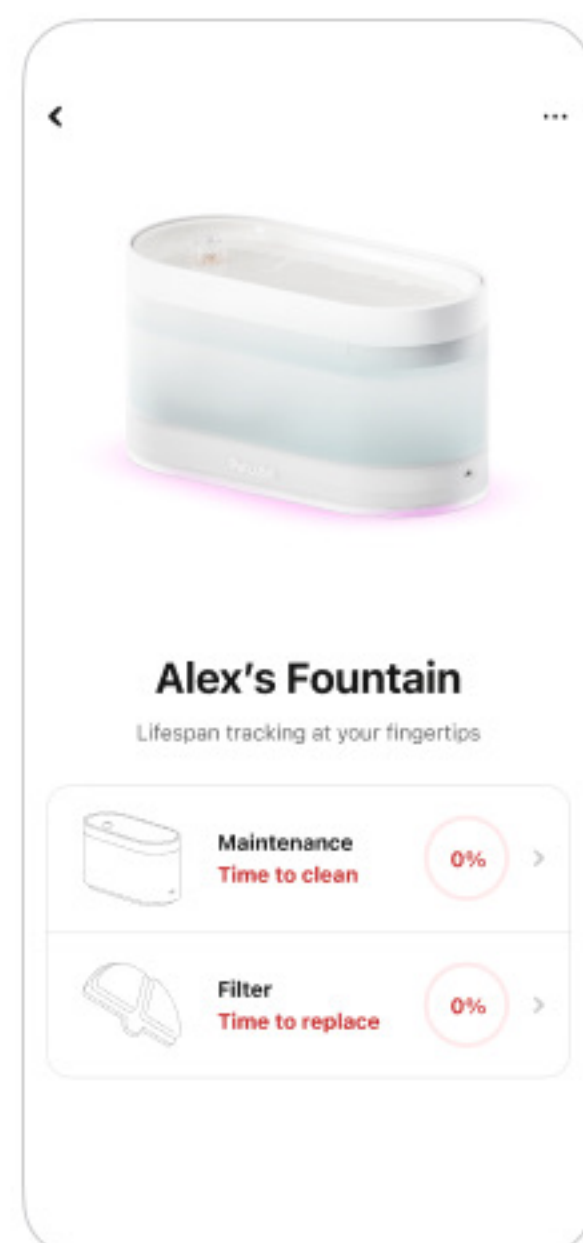
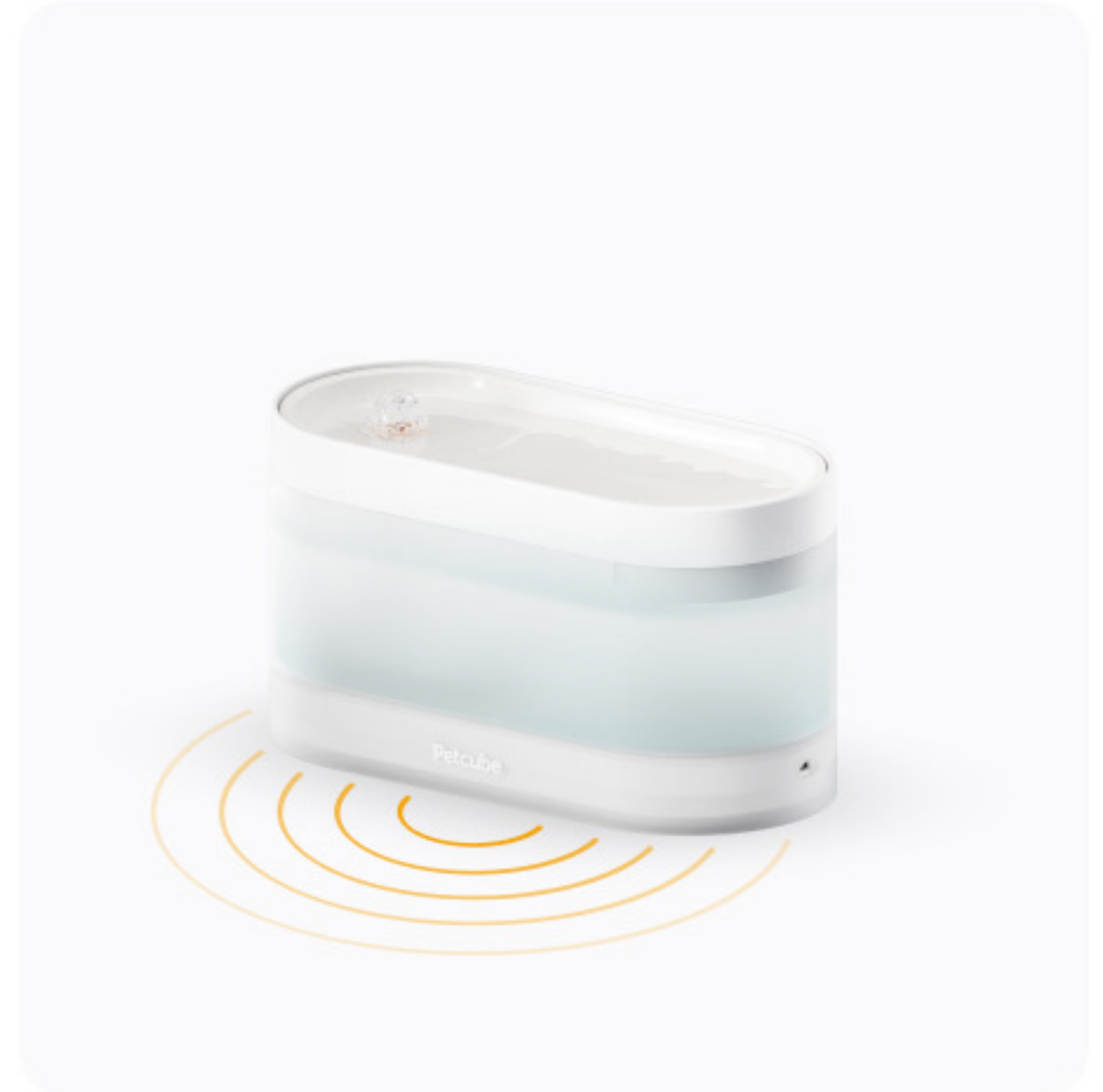


Fig. 4.1.15



1. Turning Petcube Fountain ON/OFF

To turn Petcube Fountain ON:

lift the water tank and press and hold the power button for 3 seconds. Fountain will blink GREEN for 2 seconds which is the indication that it is ON.

To turn Petcube Fountain OFF:

lift the water tank and press and hold the power button for 3 seconds. Fountain will blink RED for 2 seconds which is the indication that it is OFF.

2. Water Flow

Your Petcube Fountain is equipped with a rechargeable lithium battery which gives you freedom to place it anywhere convenient for your pet.

When Petcube Fountain is ON, the built-in radar sensor, located where the Petcube logo is printed, will automatically detect your pet's movement and activate the water flow when your pet is nearby.

The water flow continues for 15 seconds when no new movement is detected. If new movement is detected Petcube Fountain starts the water flow for another 15 seconds.

Note: this occurs for the first 30 motion detections after a water tank has been installed on the base. After this, water flow operation inherits a 6 minute cooldown before the next water flow operation triggered by motion can start.

Fountain sensing range is around 20 cm from the front covering narrow field of view to prevent false motion detection. Sensor is located underneath Petcube logo.

Note: please always place the Fountain so that Petcube logo faces your pets when they approach the fountain to allow correct fountain operation.

Petcube Fountain behaves the same way when connected to the external power supply with a USB type-C cable.

3. Charging Petcube Fountain

Petcube Fountain comes with the USB Type-C cable for charging, but does not come with a power adapter. Please use a 5V, Type-A adapter of your choice with an output of up to 2A. These are safe for charging your Petcube Fountain. Any charger with a higher voltage

(for example 9V) can damage the device.

To charge your water fountain, connect the USB cable into 5V power adapter, and connect the cable to the Type-C USB port on the water fountain power base.

Green pulsing will indicate that device is charging. Green pulsing stops once device is 100% charged.

(picture with green light, charging)



Note: the indication of low battery charge is the yellow LED color that flashes for 5 mins every 2 mins. Fountain stops dispensing water when battery is low.

1. Replacing Water Filter

Petcube Fountain keep your pets healthy and hydrated with human-grade water filtration system. Petcube Fountain packaging includes two (2) 4-Layer filtration System filters.

We recommend replacing filters every month (every 28 days).

Petcube app will guide you through the filter replacement process as well as notify you about the time when water filter replacement is needed.

Filter replacement is done in 2 easy steps: Lift the water basin of the water tank and remove the old filter from the filter compartment

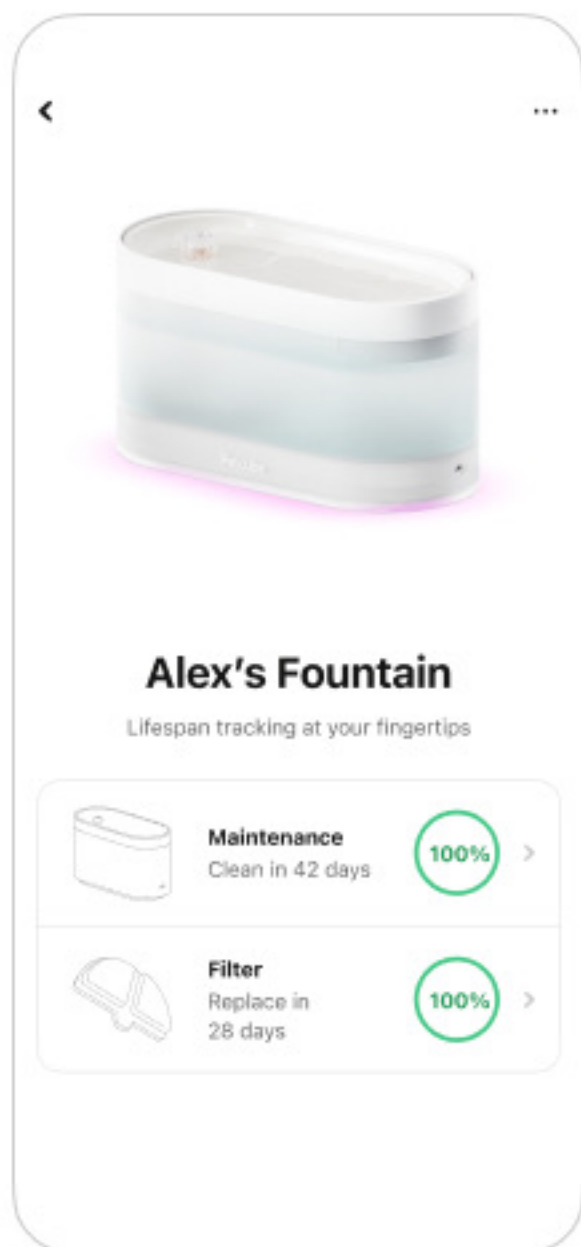


Fig. 7.1.1

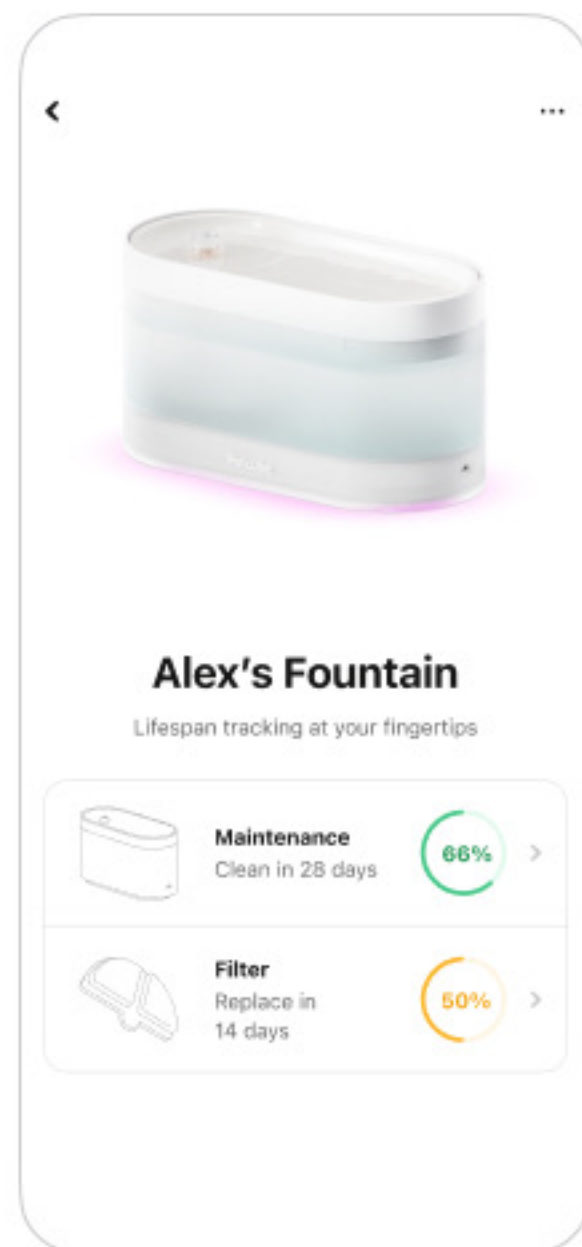


Fig. 7.1.2

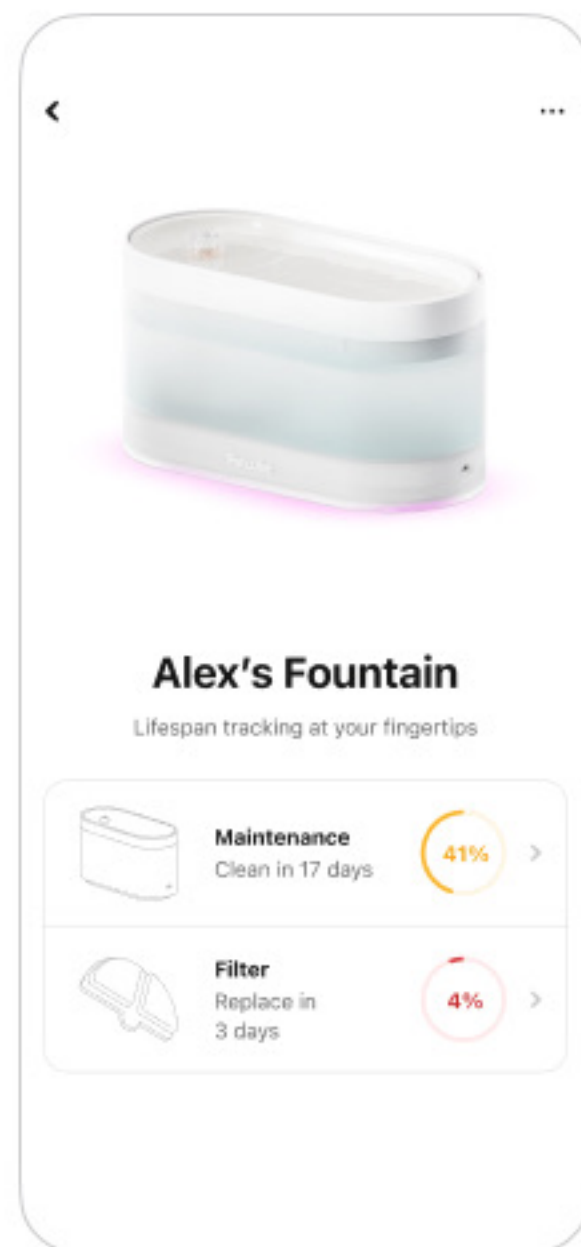


Fig. 7.1.3

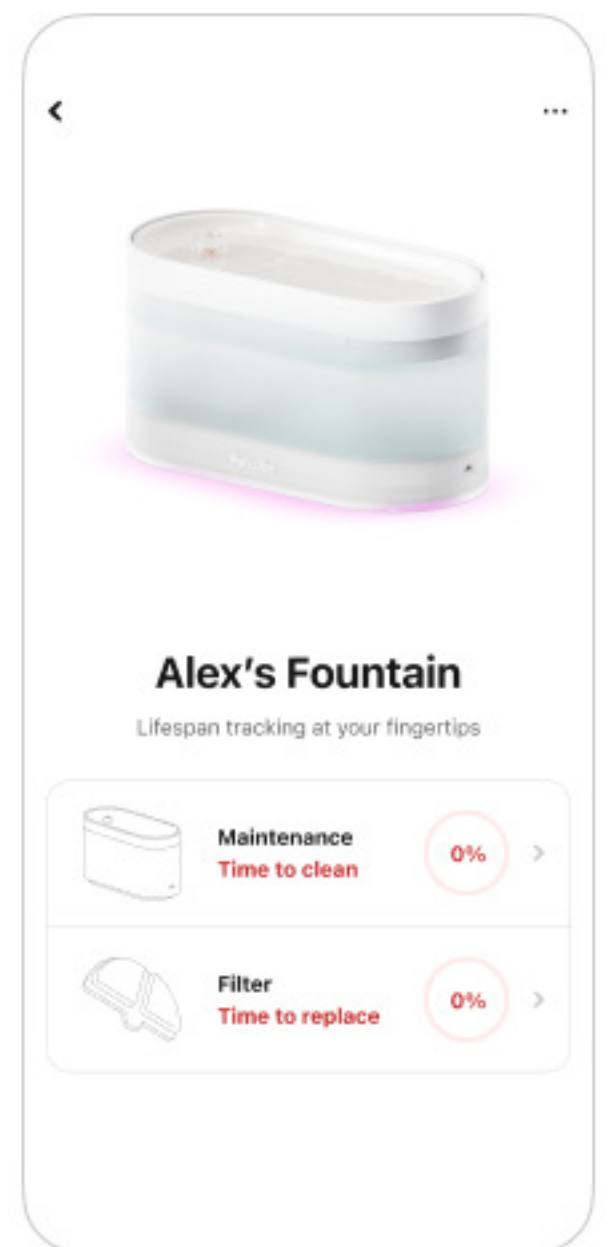


Fig. 7.1.4

Filter replacement is done in 2 easy steps:



1. Lift the water basin of the water tank and remove the old filter from the filter compartment



2. Insert the new filter into the filter compartment and cover securely with a water basin

Note: use Petcube app to reset filter span as well as purchase new water filters for replacement

2. Fountain Maintenance

Petcube Fountain is modular and easy to disassemble for maintenance. All the parts come off with no extra tools needed.

We recommend cleaning your fountain every 42 days. Petcube app will notify you when it's cleaning time.

Follow these quick steps to take the Fountain apart for cleaning:



1. Switch off the device by holding the power button for 3 seconds



2. Lift up the basin and drain all the water



3. Take out the filter and filter compartment



4. Extract the water tube, propeller lid and the propeller



5. Rinse all the components (**excluding water filter**) manually or use a dishwasher at low temperatures

8

LED LIGHT NOTIFICATIONS



Charging ongoing:
green LED pulsing until
100% charged



Turned ON:
Green LED pulsing
for 2 seconds



Low Battery:
Yellow LED pulsing for 5 mins
every 2 mins until dead



Low Water:
Red LED pulsing for 10 mins,
3 cycles, then off



Turned OFF:
Red LED pulsing for 2 seconds



Ultra-Violet Water Cleaning:
Purple LED pulsing during UVC
operation (3 mins, every 24 hours)

How often should I refill the water?

The Petcube Fountain's 1.7-liter (57oz) capacity provides up to a full week of fresh water for single-pet households, ensuring worry-free hydration. In multi-pet households, refilling may be required more frequently depending on the number of pets and their water consumption.

Where should I place the Petcube Fountain?

Place the Petcube Fountain on a stable, level surface with the logo facing your pet. This ensures the motion sensor underneath the logo detects your pet to activate the water flow. Keep the Fountain indoors and away from direct sunlight or excessive heat.

What happens if the water runs out?

The Fountain should never be operated without water. Running it dry may damage the pump. Ensure the tank is refilled promptly to avoid interruptions. Red light blinking is the indication of low water level. Water fountain will automatically power off when water is at minimum level.

Is it safe to leave the Fountain running 24/7?

Yes, the Fountain is designed for continuous use. If operating on battery, ensure it's charged when needed.

Can I use the Fountain for dogs?

The Fountain is primarily designed for cats and small dogs. Larger dogs may find the tray too small.

How can I access and control my Petcube Fountain?

The Petcube Fountain can be monitored and managed through the Petcube App. Simply connect your Fountain during the setup process to access features such as reminders for filter replacement, water level alerts, and maintenance notifications, making sure your pet always has fresh and clean water.

The Petcube app allows you to monitor the Fountain's status, track water and filter levels, and receive maintenance reminders. It also sends notifications when it's time to refill the water or replace the filter, helping you ensure your pet always has access to fresh water.

Is the Fountain quiet?

Yes, the Petcube Fountain operates at below 30 dB, ensuring it doesn't disturb your home environment.

Is the Petcube Fountain easy to set up?

Yes, the Petcube Fountain is simple to set up. Fully charge the device, download the Petcube App for iOS or Android, and follow the on-screen instructions to assemble and activate the Fountain. A Quick Start guide is included in every box, and customer support is available 24/7 if you need assistance.

Can I connect multiple Petcube Fountains to one account?

Yes, you can connect multiple Petcube Fountains to a single account. Open the Petcube app, tap the Plus icon in the top right corner, select "Petcube Fountain" from the list, and follow the setup instructions for each additional device.

How often should I replace the filter?

Replace the filter once every 4 weeks to ensure optimal water quality and cleanliness. You can purchase the filters through Petcube app.

Can I use the Fountain without the filter?

No, the filter is essential for trapping hair, sand, and other particles, as well as for water softening and removing odors.

Does the UV light run all the time?

The UV light operates automatically during the filtration cycle, ensuring the water is continuously purified without manual intervention. UVC process starts automatically every 24 hours and lasts for 3 minutes. Purple LED blinking is the indication of Ultra-Violet cleaning operation.

Is Internet connection required to use Petcube Fountain?

No, the Petcube Fountain does not require an Internet connection, Bluetooth, or Wi-Fi to operate. While the Petcube app enhances the user experience with tracking and maintenance reminders, the Fountain functions fully on its own without the app.

Can I use a dishwasher to clean the Fountain?

Yes, the ceramic or stainless-steel upper tray is dishwasher-safe. However, the filter and base components should be cleaned by hand or in the dishwasher at low temperatures to avoid damage.

Is the Fountain battery-powered or does it need to be plugged in?

The Petcube Fountain with a rechargeable lithium-ion battery that can last up to 21 days on a single charge. Additionally, a chew-proof USB-C cable is included for continuous power and operation. The Petcube Fountain functions the same when using the battery or when connected to an external power source via the USB-C cable.

How large is it? How much water does it hold?

The Petcube Fountain has dimensions of 255x121x140 mm (10.04x4.76x5.51 inches) and holds up to 1.7 liters (57 oz) of water, making it ideal for cats and small dogs.

The water flow does not start even though there is movement

Only the initial 30 motion detections after a water tank is installed on the base will trigger the water flow. Subsequently, motion-triggered water flow will have a 6-minute cooldown period between operations. If needed, the cooldown period can be reset by lifting the water tank and then placing it back onto the base.

Water Fountain emits buzzing or siren noise

The water tube, propeller lid, and propeller may not be installed correctly if this occurs. Remove the water tank from the power base and lift the fountain basin to check whether all the components are securely installed and submerged under water.

The water flow from the spout is weak

The water flow from the spout slows down gradually as the water level in the tank drops. The normal flow rate is restored after refilling the tank.

Do I need to soak the filter before first use?

No, there is no need to soak Petcube filters before installation